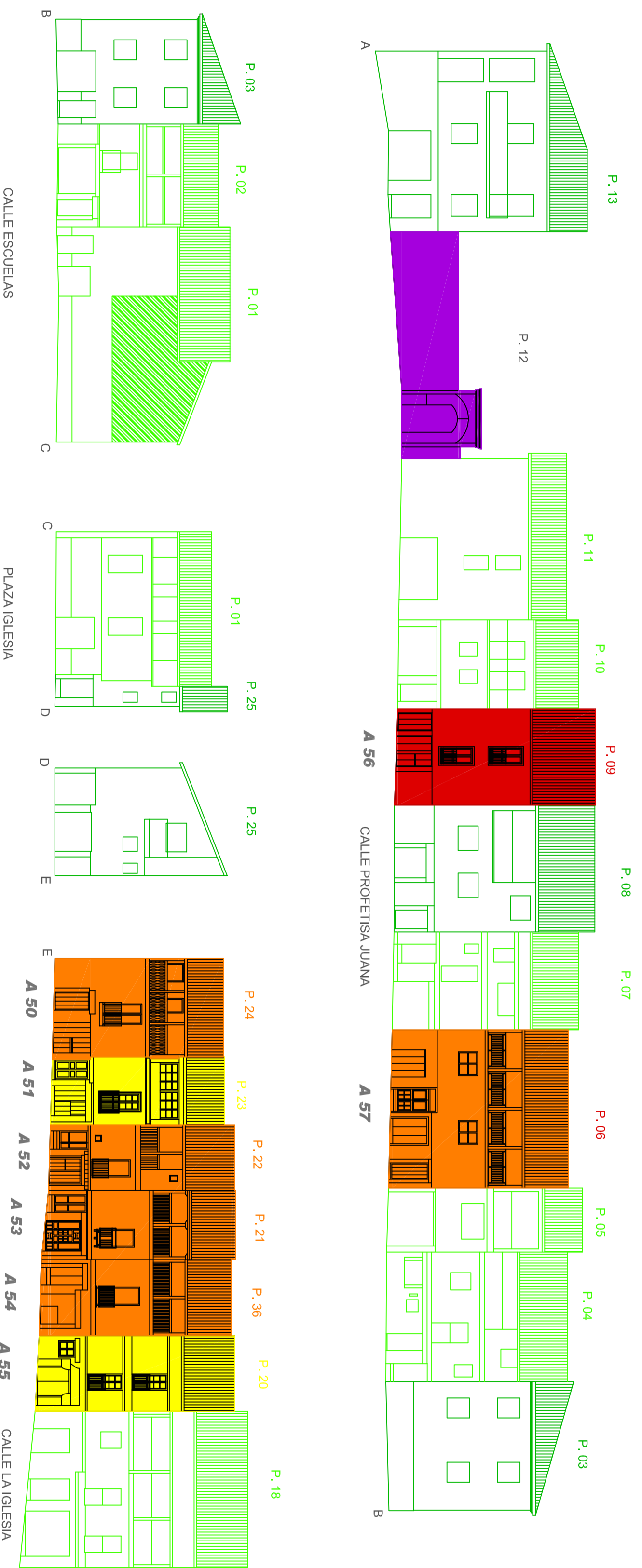
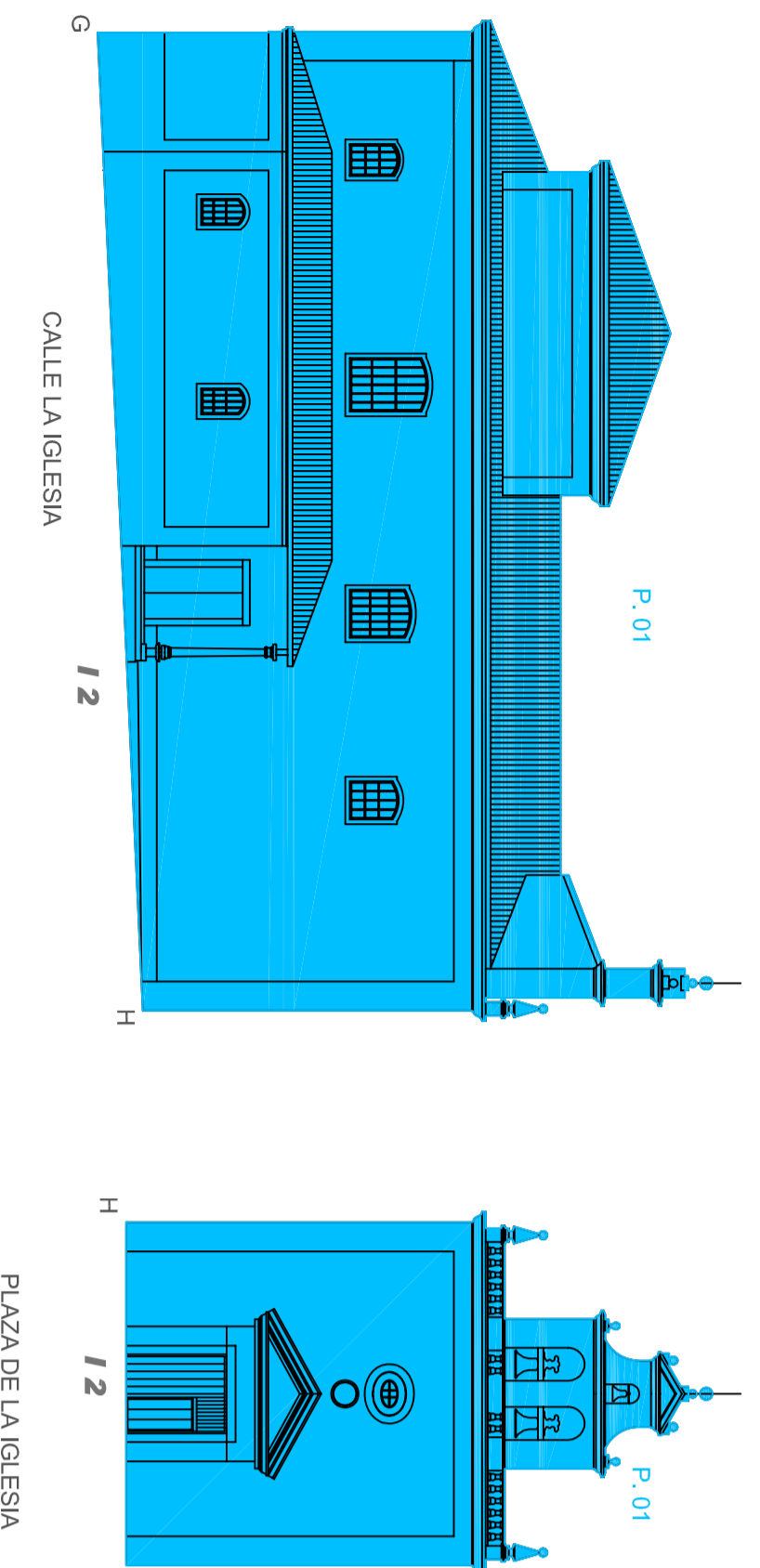


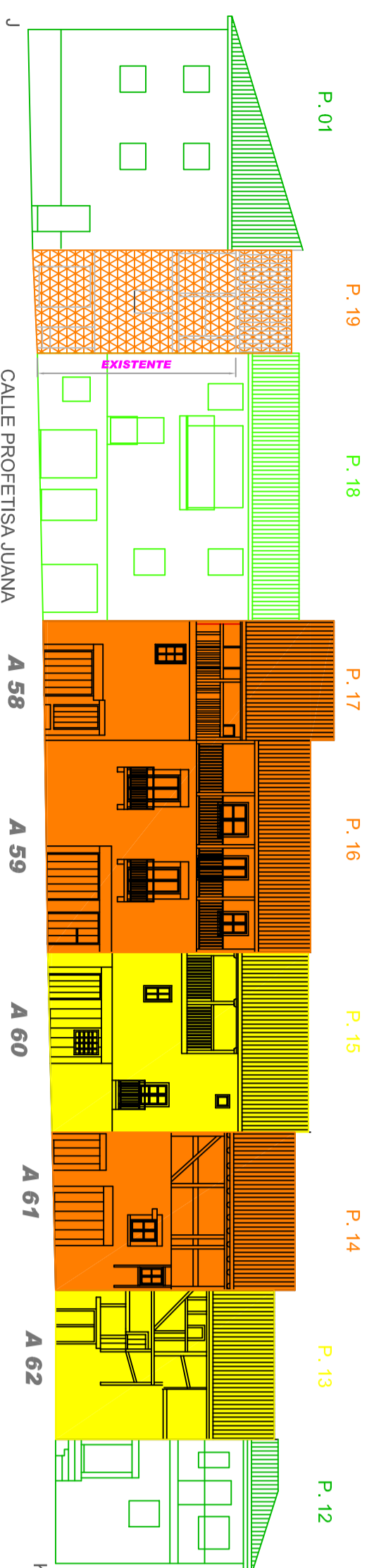
MANZANA 22900

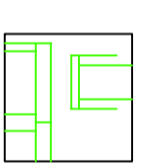



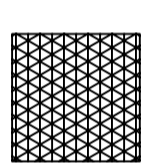

MANZANA 22907









MANZANA 22903

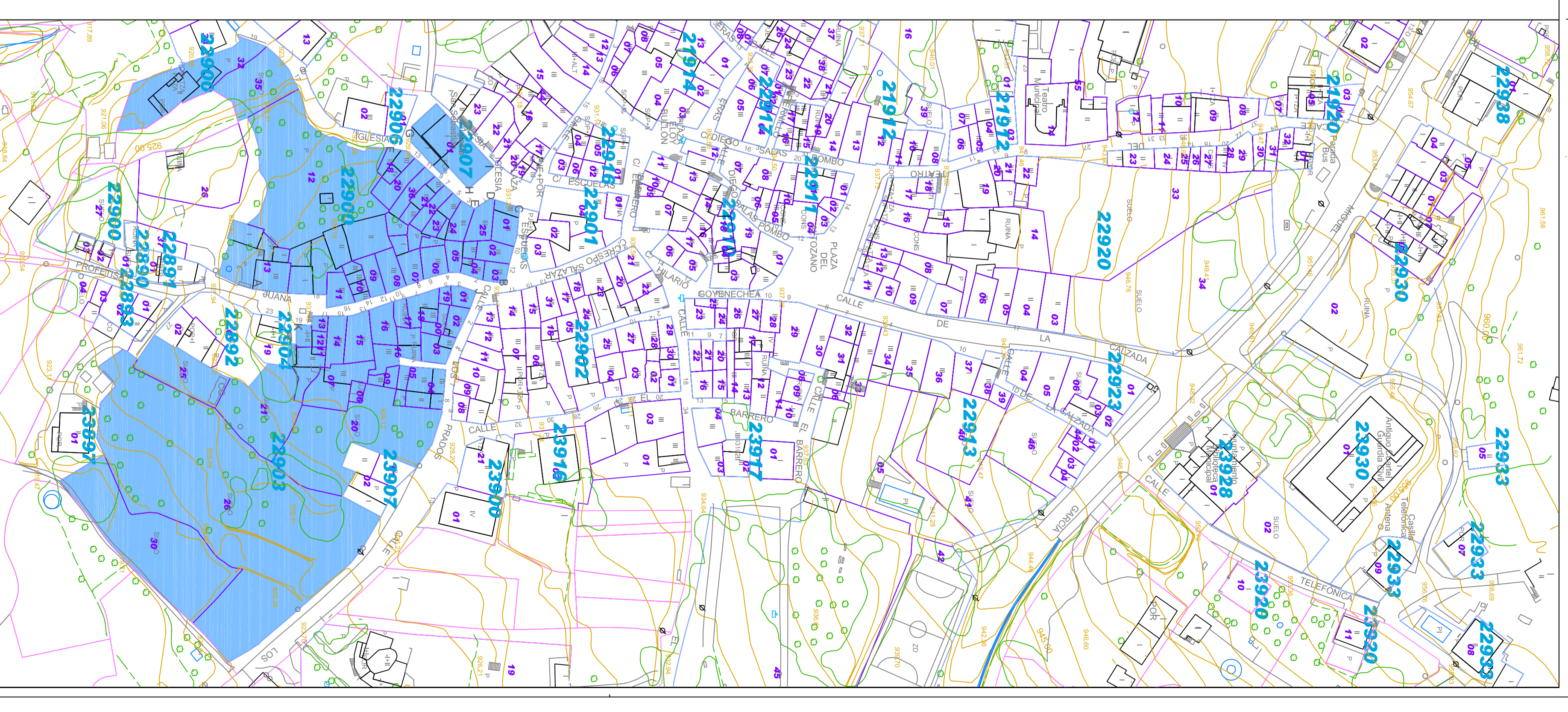


- PARCELAS RENOVADAS**
-  CON INTENCION DE ADAPTARSE A MODELOS TRADICIONALES
 -  CON ADOPCION DE MODELOS EXTERNOS

- PARCELAS RENOVABLES**
-  CON EXISTENCIA DE ELEMENTOS CONDICIONANTES
 -  SIN ELEMENTOS CONDICIONANTES

NOTA: EL COLOR DE LA TRAMA CORRESPONDE AL SUBGRUPO TIPOLOGICO AL QUE DEBE RECURRERSE PREFERENTEMENTE PARA LA RENOVACION. SUBGRUPOS TIPOLOGICOS (COLOR SOLIDO: CATALOGADOS)

-  PU
-  PR
-  PV
-  MC
-  F0
-  F1
-  F2
-  ELEMENTOS SINGULARES CATALOGADOS



DIPUTACION DE SALAMANCA
A.T.M. Y URBANISMO

AYUNTAMIENTO DE
SEQUEROS

PROGRAMA DE PROMOCION DE PLANEAMIENTO URBANISTICO MUNICIPAL
DIPUTACION DE SALAMANCA - P.IORD. 2014

PLAN ESPECIAL DE PROTECCION DEL CONJUNTO HISTORICO DE
SEQUEROS

Plano
P4-4 ALZADOS MANZANA 22900 - 22907

JOSÉ CARLOS MARCOS BERROCAL, arquitecto
ÁNGEL LEÓN RUIZ, arquitecto

1/200
JULIO 2015