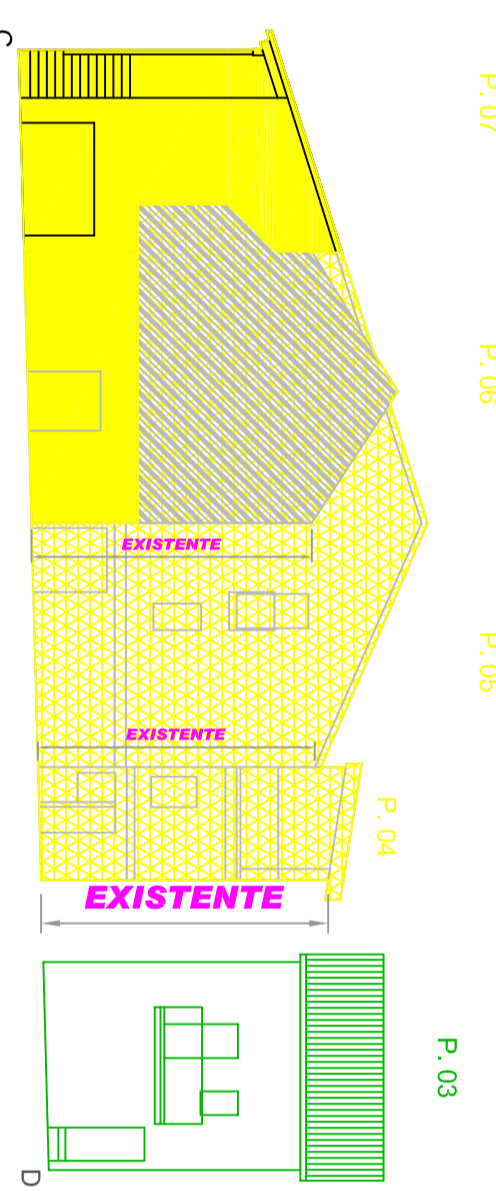
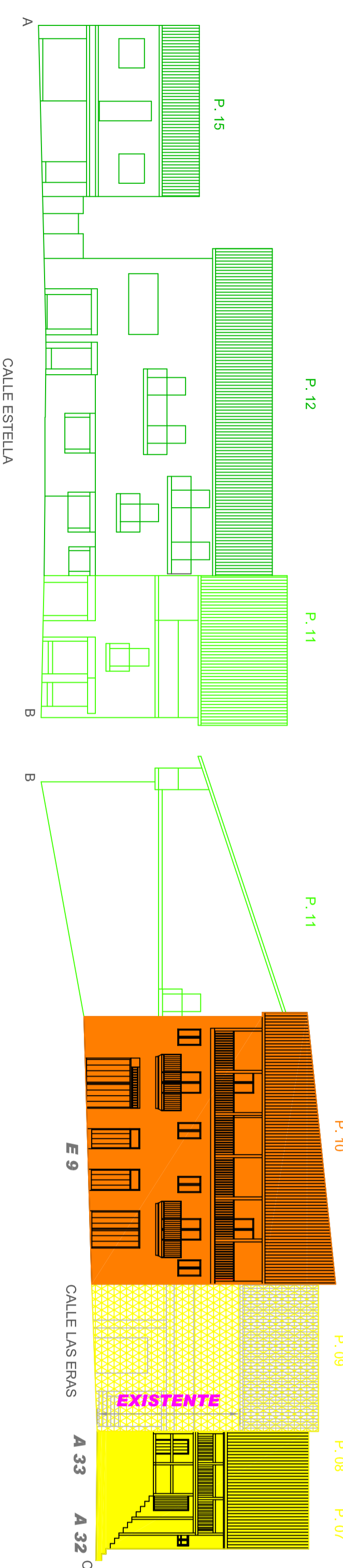

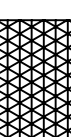







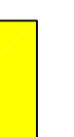




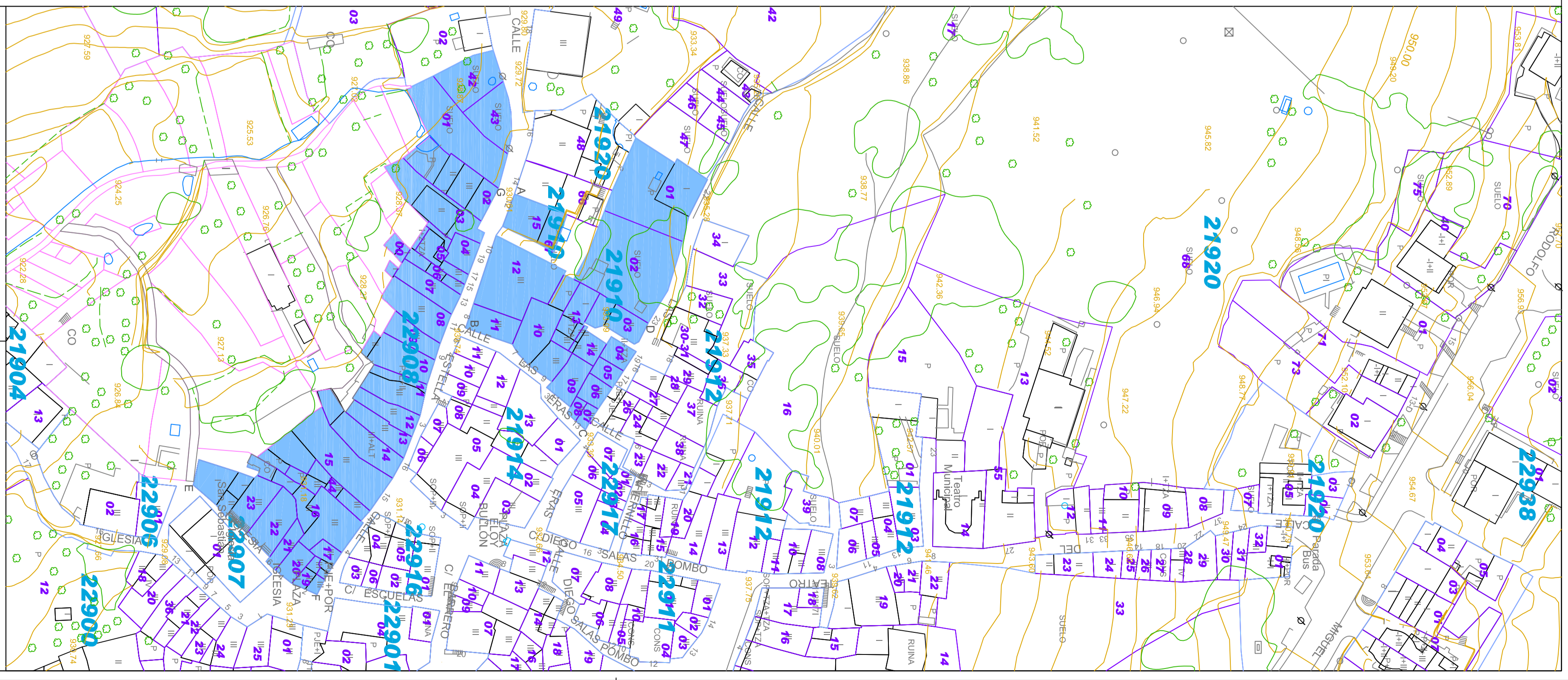
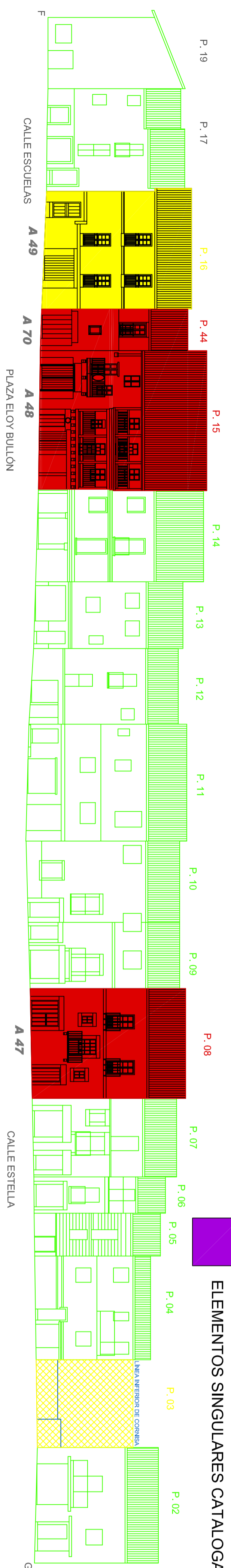
# MANZANA 21910

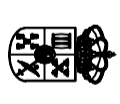


# MANZANA 22908



-  PARCELAS RENOVADAS
  -  CON INTENCION DE ADAPTARSE A MODELOS TRADICIONALES
  -  CON ADOPCION DE MODELOS EXTERNOS
  -  PARCELAS RENOVABLES
  -  CON EXISTENCIA DE ELEMENTOS CONDICIONANTES
  -  SIN ELEMENTOS CONDICIONANTES
- NOTA.- EL COLOR DE LA TRAMA CORRESPONDE AL SUBGRUPO TIPOLOGICO AL QUE DEBE RECURRIRSE PREFERENTEMENTE PARA LA RENOVACION. SUBGRUPOS TIPOLOGICOS (COLOR SOLIDO:CATALOGADOS)
-  PU
  -  PR
  -  PV
  -  MC
  -  F0
  -  F1
  -  F2
  -  ELEMENTOS SINGULARES CATALOGADOS




**DIPUTACION DE SALAMANCA**  
 A.T.M. Y URBANISMO

**AVANTAMIENTO DE SEQUEROS**

**PROGRAMA DE PROMOCION DE PLANEAMIENTO URBANISTICO MUNICIPAL**  
 DIPUTACION DE SALAMANCA - P.ORD. 2014

**PLAN ESPECIAL DE PROTECCION DEL CONJUNTO HISTORICO DE SEQUEROS**

Plano **P4-1** ALZADOS MANZANA 21910 - 22908

JOSÉ CARLOS MARCOS BERROCAL, arquitecto  
 ANGEL LEÓN RUIZ, arquitecto  
 CARLOS MARCOS OREJUDO, Lcdo. Bellas Artes

1/200  
 JULIO 2015